

12V Air Compressor

With Built-in LED Light & Auto Shut-off



Intention for Use	1
Product Elements	2
How to Use the Streetwize 12V Digital Air Compressor with LED Light	2
How to Turn On The Digital Air Compressor	3
How to Select Which Pressure Unit to Use	3
How to Check Tyre's Air Pressure	3
How to Inflate with the Streetwize 12V Digital Air Compressor with LED Light	3
Maintenance	4
Manufacturer's Warranty	4
Health & Safety Warnings	4
Technical Specification	4

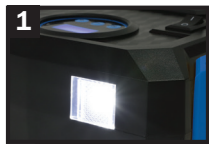
Intention for Use

Thank you for purchasing the Streetwize 12V Digital Air Compressor with LED Light. This air compressor is ideal for inflating tyres on cars, motorcycles, bicycles, SUVs, RVs & ATVs. It is also suitable for inflating sports equipment and other inflatables.

This air compressors provides a maximum flow rate of 25 litres per minute, and can inflate a 14" tyre that is completely flat in up to 6 minutes. It comes with a built-in LED light for use at night or in low light conditions and a digital display that shows you the air pressure in PSI, BAR, kPA, Kg/cm2.

This air compressor also comes with built-in storage for safely storing away the attached 3m cable and the air hose pipe. Also comes with three nozzle adaptors for multi-use.

Before using the Streetwize 12V Digital Air Compressor with LED Light, we advise that you read all the information in this document.



Product Elements

1. Built-in LED Lamp
2. On/Off Switch
3. Digital pressure gauge
4. Air hose pipe with screw on connector
5. 3m 12V DC power cable
6. Replacement Fuse
7. Ball Inflator nozzle adaptor
8. 2 x tampered nozzle adaptors

How to Use the Streetwize 12V Digital Air Compressor with LED Light & Auto Shut-off

The following provides instructions on how to use the Streetwize Cordless Digital Air Compressor with LED Light & Auto Shut-off.

These instructions will go through how to:

- Turn on the digital air compressor
- Select which pressure unit to use
- Check your tyre's air pressure
- Inflate your tyres

Please Note: ALL images are for illustration purposes only, some items may differ slightly in appearance.



How to Turn On The Digital Air Compressor

To turn on the Streetwize 12V Digital Air Compressor with LED Light, simply connect the unit's 12V DC plug into your vehicle's 12V socket. The unit will turn on by itself once your vehicle is switched on.

Please note, when you turn on the unit, the built-in LED light will also come on by itself as well.

How to Select Which Pressure Unit to Use

The Streetwize 12V Digital Air Compressor with LED Light measures air pressure readings in PSI, BAR, kPa and kg/cm². The following shows you how to select your pressure unit.

Turn on the compressor unit as mentioned in the previous section.

To select which pressure unit you want to use, simply press the "R" button and this will change the pressure unit.

Keep pressing the "R" button again until your preferred pressure unit appears on the screen.

Please note, when the compressor is turned off, you will need to select the pressure unit again by following the above steps in this section.

How to Check Tyre's Air Pressure

Please note, for checking the tyre's air pressure in cars, vans, motorcycles and bicycles, an adaptor will not be required.

The air hose pipe's trigger lock should fit on the tyre's valve.

1. To check tyre pressure, connect the air hose pipe to the tyre's valve and use the trigger lock to secure it in place.
 2. Turn the compressor unit on and select which pressure unit you want to use to measure the pressure.
 3. Once the pressure unit has been selected, the current air pressure will appear on the LCD display.
 4. To disconnect the air compressor from the tyre, release the trigger lock to remove the air hose pipe from the tyre valve.
-

How to Inflate with the Streetwize 12V Digital Air Compressor with LED Light & Auto Shut-off

The Streetwize 12V Digital Air Compressor with LED Light has been designed to be easy to use. To inflate with the compressor unit, please follow inflation instructions below:

1. Select the appropriate nozzle adaptor for the inflatable object that you want to inflate. For inflating tyres on cars, vans, motorcycles and bicycles, an adaptor will not be required. The air hose pipe's screw on connector should fit on the tyre's valve.
 2. Ensure the air hose pipe is securely fastened to the compressor unit. If a nozzle adaptor is required, ensure this is securely fastened to the air hose screw on connector.
 3. Secure the screw on connector to the valve of the tyre or inflatable object that you want to inflate.
 4. Turn on the compressor unit and select the pressure unit you want to use (see previous sections).
 5. When you have selected the which pressure unit you want to use, use the "+" or "-" buttons to set the desired air pressure you want to achieve. If you want to return to the default pressure setting, press both "+" and "-" together. The default pressure set is 30PSI.
 6. Once the air pressure has been set, turn the "O/I" switch to "I" and this will commence the inflation.
 7. When your desired pressure has been reached, the compressor unit will automatically stop inflating.
 8. To re-inflate, simply turn off the switch and turn on again.
-

How to Replace The Fuse

The Streetwize 12V Digital Air Compressor comes supplied with a replacement fuse. To replace the fuse, please see the instructions below:

1. The fuse for this air compressor is located inside the 12V plug. Before replacing the fuse, please make sure the compressor is fully cooled down. Never replace the fuse when the 12V plug is hot.
2. Once cooled down, unscrew the tip of the 12V plug to access the fuse.
3. Remove the old fuse and replace it with the replacement fuse
4. Screw the tip back onto the 12V plug.



IMPORTANT: Setting Air Pressure: When inflating tyres, please check your vehicle's manual for optimum tyre pressure. For other inflatables, including bicycles tyres, small inflatable toys and balls, please check with the manufacturer

WARNING: The advised maximum continuous operating time for this unit is 8 minutes. Please do not continuously use this unit for more than this time, as it increases the risk of overheating. After 8 minutes of continuous use, please allow for the unit to cool down for at least 15 to 20 minutes.

Maintenance

This Digital Air Compressor has been designed to operate with minimum maintenance for a long time. The life span of the product may be prolonged by ensuring you follow all the how-to and safety instructions in this manual. **We also advise that the unit is cleaned with a soft cloth after each use.**

Manufacturer's Warranty

This product comes with a 12 month manufacturer warranty which starts on the date of purchase. The warranty covers technical faults ONLY. Any issues caused by accidental damage or wear and tear are not covered.

For technical support within the warranty, please contact us on support@streetwizeaccessories.com

Health & Safety Warning

1. Never place the connected air hose pipe into your mouth or ear. Avoid placing it near eyes or any pets or animals.
2. Keep away from children. This compressor is not a toy.
3. Avoid using the compressor near flammable liquids or gases. Don't use the compressor near the petrol stations.
4. The compressor unit will generate a lot of heat during inflation. To prolong the use of the compressor unit, stop the machine after 8 minutes of continuous use and let it cool down for 15 to 20 minutes.
5. In case of abnormal noise or excessive heat during inflation, please shut down the compressor unit immediately and allow it to cool down for at least 15 minutes.
6. Please avoid dropping or damaging the product.
7. Avoid using the compressor when it is raining.

Technical Specifications

Product:	Streetwize 12V Digital Air Compressor with LED Light & Auto Shut-off
Supplier Code:	SWAC23
Input voltage:	DC 12V
Power	100W
Power cable length	3 metre
Max. pressure	150PSI
Max.current:	120W
Inflation efficiency:	14" tyre standard tyre: 0 to 36 PSI within 6 minutes
Piston size (mm)	22mm
Max. atmospheric flow:	25L/min
Pressure units:	PSI, BAR, kPa, kg/cm ²
Length of air hose pipe:	50 cm
Product size	15.5 cm x 7.8 cm x 19.5 cm
Product weight	0.85Kg

Streetwize: Ashburton Road West, Trafford Park, Manchester M17 1RY

www.streetwizeaccessories.com

For product support:

E: support@streetwizeaccessories.com

T: +44 (0)161 447 8597

For trade enquiries:

E: sales@streetwizeaccessories.com

T: +44 (0)161 447 8580