



SWCH400

12V Auxillary Heater & Fan

Information for use _____

Intention For Use

Thank you for purchasing this auxillary heater & fan from Streetwize. This product is designed to be used as a supplementary heater to your vehicle's heating system as well as a cooling fan. The heating fan can also be used to defrost or remove condensation from your vehicle's windscreen from the inside.

This product is powered by your vehicle's 12V socket, and it is suitable for use in cars, estates, motorhomes, vans, and 4x4s.

Before using this product, please read through all the information in this document before using this document.

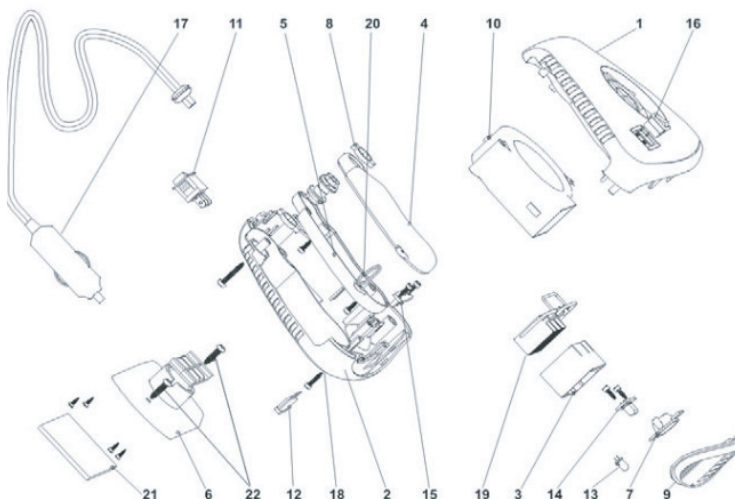
Product Elements

Important: Some of the parts listed above are shown for illustrative purposes only. Replacement parts are not available.

1. Aux. Heater & Fan Unit
2. Dashboard mount
3. Adhesive pad
4. Screws

Part	Description	Qty.
1	Upper Housing	1
2	Lower Housing	1
3	PTC Holder	1
4	Upper Handle	1
5	Lower Handle	1
6	Mounting Base	1
7	LED Reflector	1
8	LED Lens	1
9	Air Vent Window	1
10	Fan Assembly	1
11	Power Switch	1

Part	Description	Qty.
12	Fuse 15A	1
13	Red LED	1
14	White LED	1
15	PCB	1
16	LED Switch	1
17	Cigarette Lighter Plug	1
18	Fuse Holder	1
19	PTC	1
20	Key Ring	1
21	Adhesive Strip (2 sided)	1
22	Mounting Screw	2



Installation Instructions

IMPORTANT: Only use a 15 Amp rated power socket. Any 12V with a higher rating may lead the fuse being blown.

1. Before plugging in the unit, please ensure that both the LED light switch and heat/fan switch are set to OFF.
2. Attach the dashboard mount via the slot at the bottom (you will need to use added force to insert the mount). Place the mount on your vehicle's dashboard.
TIP: We advise you to use adhesive pads (included) to secure the unit in place. There are screwholes (with screws included), but this is entirely optional as it will require drilling permanent holes in your vehicle's dashboard.
3. Plug in the unit to your vehicle's dashboard. Then turn on your vehicle.

Heater Fan

Set the heater/fan switch to "Heat". This will provide warm air from the unit. You will notice that the red LED light will also come on.

Cooling Fan

Set the heater/fan switch to "Fan". This will provide cooling air from the unit.

LED Light

Set the LED light switch to "I". This will turn the LED light on.

Windscreen Defroster/Condensation Remover

To use this unit to remove condensation from your windscreen or defrost it, remove the unit from the mount and unfold the handle on the side (where the key ring is). Then set the heater/fan switch to "Heat" and aim the heat toward the frost or condensation.

WARNING: Do not operate this unit longer than 15 minutes at any one time. Always allow the heater to cool down completely before placing it back into storage.

After Use

Once you have finished using the unit after your journey, please unplug the unit from the vehicle's 12V socket.

Health & Safety

- This product is not a toy. Do not allow children to play with or near this item.
- Please check to see if the installation surface does not have any hidden wires or other components before drilling or driving screws.
- Do not exceed the vehicle manufacturers rated fuse capacity in the Power Socket circuit at all times.
- Do not leave heater plugged in while starting the vehicle or while vehicle's engine is off. Risk of fuse being blown.
- Check vehicle manual to ensure the Power Socket receptacle is rated at 15 Amps or greater. Do not use a socket extension or pigtail to operate this Heater.
- Only use this Heater for up to 15 minutes at a time, and allow to cool between uses.
- Do not operate other 12V appliances at the same time.



Streetwize, Suite GA, Marsland House,
Marsland Road, Sale M33 3AQ

For Product Support:

E: support@streetwize.co.uk

T: +44 (0)161 447 8597

EU Regd. Address:

Ace Supply Co (Europe) Ltd. 25 Herbert Place,
D02 A098 Republic of Ireland

www.streetwize.co.uk
