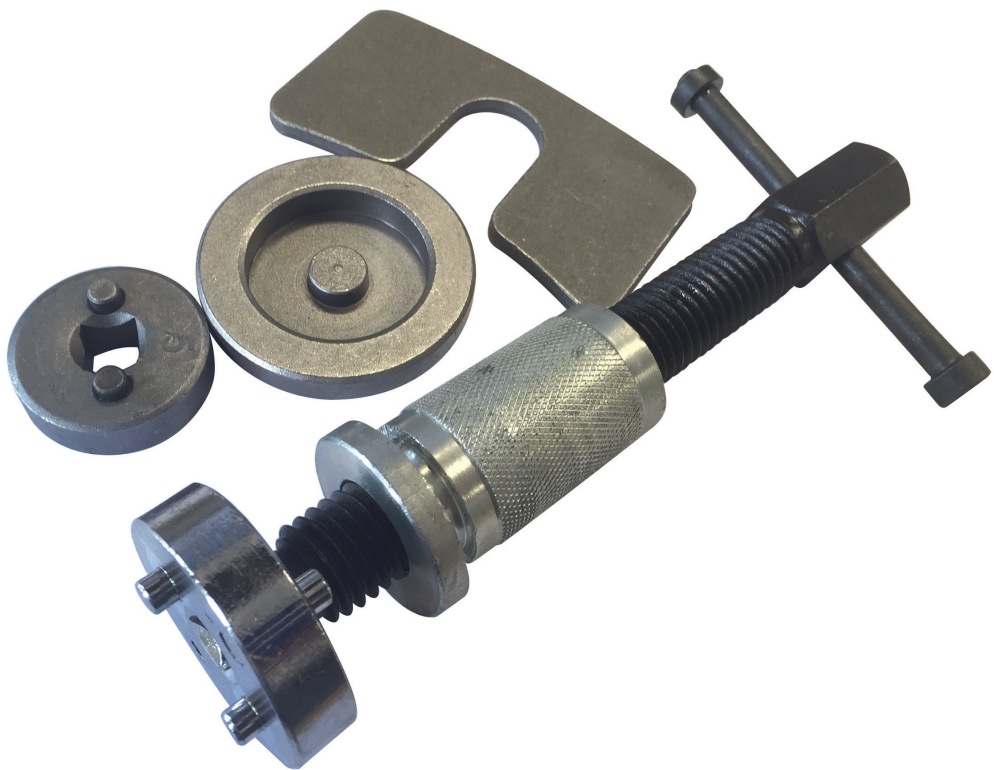




SWTOOL21

# 2 in 1 Brake Caliper Rewind Tool





**PLEASE READ THESE INSTRUCTIONS CAREFULLY. NOTE THE SAFE OPERATIONAL REQUIREMENTS, WARNINGS AND CAUTIONS. USE THIS PRODUCT CORRECTLY, WITH CARE AND FOR THE PURPOSE FOR WHICH IT IS INTENDED. FAILURE TO DO SO MAY CAUSE DAMAGE AND/OR PERSONAL INJURY AND WILL INVALIDATE THE WARRANTY.**

### **SAFETY INSTRUCTIONS:**

#### **WARNING!**

- Use the correct adapter for the vehicle.
- Check for misalignment or binding of moving parts, breakage of parts and any other condition that may affect the product's operation.
- Great care must be taken on all brake components, especially the brake lines.
- Do not allow the caliper to hang free by the flexible hose.
- Lifting, removal of wheels, disassembly of the braking system and reassembly must be undertaken as per manufacturers workshop instruction or the appropriate Haynes manual.
- When reassembling the braking system and re-fitting the wheels, all components must be correctly torqued using an appropriate and correctly calibrated torch wrench.
- Must use with caution as incorrect use can cause damage to the piston, bore or brake lines which would render the vehicle unsafe to drive.
- If in any doubt, do not undertake the task and seek assistance from a suitable garage.

#### **IMPORTANT:**

Always refer to the vehicle manufacturer's service instructions, or a proprietary manual, to establish the current procedure and data. These instructions are provided as a guide only.

#### **DESCRIPTION:**

This tool is used to wind back brake caliper pistons when servicing brake caliper or replacing brake pads. It includes left and right hand threaded rewind tools allow the easy return of the brake piston into the caliper to provide clearance for new brake pads.

#### **FEATURES:**

- Winds back brake piston for replacing brake pads.
- Fits most domestic or import vehicles.
- Wind back front brake pistons.
- Wind back rear brake pistons with or without hand/parking brake system part of the brake calipers.

**SPECIFICATION:**

3/8 inch drive with reversible key  
Shaped reaction plate  
Adaptor 3 - 35/42/53mm  
Adaptor 5 - 35mm

**APPLICATION**

Adaptor 3 - 35/42/53mm variable size drive key -  
Application for most cars such as Alpha Romeo, Audi, Citroen, Fiat, Ford, Honda, Nissan, Peugeot, Renault, Rover, Saab, Seat, Subaru, Volkswagen, Volvo.

Adaptor 5 - 35mm drive key with two pins  
Ford – Mazda – Mitsubishi – Toyota.

**OPERATING INSTRUCTIONS:**

- This service kit will work with most vehicles.
  - Read the vehicle manufacturers workshop manual or the appropriate manual to determine which disc and thrust bolt to use.
  - Raise and safely secure the vehicle.
  - If doing the rear calipers, do not apply handbrake. Take extra care when securing the vehicle.
  - Remove the wheel and brake caliper.
  - Remove the worn brake pads and hardware.
  - Service the caliper according to the vehicle manufacturers instructions.
  - Move the T-handle of the thrust bolt to one side and slide the plate over the T-handle then down the thrust bolt until it rests on the shoulder of the bottom of the thrust bolt. Apply the correct disc to the two pegs on the bottom of the thrust bolt.
  - According to the vehicle manufacturers instructions, screw the piston into the caliper.
  - Reassemble caliper, brake pads and wheels.
- NOTE: Test the brakes thoroughly before use.*
- Clean and store the service kit indoors.



**Streetwize Accessories:**

Unit 1, Royce Trading Estate, Ashburton Road West,  
Trafford Park, Manchester M17 1RY

---

**Sales enquiries:** [sales@streetwizeaccessories.com](mailto:sales@streetwizeaccessories.com)

**Technical enquiries:** [support@streetwizeaccessories.com](mailto:support@streetwizeaccessories.com)

**Telephone:** 0161 447 8597

[www.streetwizeaccessories.com](http://www.streetwizeaccessories.com)