



SWCHEM48

Emergency Tyre Puncture Repair Kit

Information for use



PRODUCT INFO streetwize.online/SWCHEM48

Produktinformation
Information du produit
Información sobre el producto

Intention For Use

Thank you for purchasing this Emergency Tyre Puncture Repair Kit from Streetwize. This kit is used to repair puncture tyres with a breach up to 6mm. The kit includes a uniquely formulated tyre sealant, a 150PSI air compressor and a handy storage bag.

This kit is primarily designed to repair punctured tyres on cars, vans, caravans, motorhomes, motorcycles, estates and 4 x 4.

When faced with a punctured tyre, the tyre sealant is used to cover and seal the affected area with the breach. The air compressor is used to inflate the tyre.

Before using this product, please read through all the information in this document. Please keep this document for future reference.

IMPORTANT: This kit provides a temporary solution to repair a punctured tyre. Once you have used this kit to repair your tyre, please take it to your local garage to replace your tyre.

Health & Safety

Tyre Sealant

While this water-based sealant has been uniquely formulated to be non-corrosive, non-flammable and non-volatile, the following safety precautions need to be kept in mind.

1. This sealant is only suitable for repairing tyre breaches (punctures) up to 6mm in size. For breaches bigger than this, please contact a professional mechanic to replace the tyre.
2. Do NOT, under any circumstance, ingest the tyre sealant. Seek medical attention immediately if such a situation arises.
3. Please keep this tyre sealant away from children at all times. If children do come near the sealant, they must be supervised at all times.
4. If the sealant gets onto your skin, please wash the affected area immediately.
5. When handling the sealant, please wear suitable hand protection.
6. Avoid getting the sealant into your eyes. If such a situation arises, please rinse your eyes with water immediately and please seek medical attention immediately.
7. Prior to using this kit, please read and familiarise with the warning labels on both the air compressor and tyre sealant.

Air Compressor

1. Never place the connected air hose pipe into your mouth or ear. Avoid placing it near eyes or any pets or animals.
2. Keep away from children. This compressor is not a toy.
3. Avoid using the compressor near flammable liquids or gases. Don't use the compressor near the petrol stations.
4. The compressor unit will generate a lot of heat during inflation. To prolong the use of the compressor unit, stop the machine after 10 minutes of continuous use and let it cool down for 15 to 20 minutes.
5. In case of abnormal noise or excessive heat during inflation, please shut down the compressor unit immediately and allow it to cool down for at least 15 minutes.
6. Please avoid dropping or damaging the product.
7. Avoid using the compressor when it is raining.

Product Elements

1. Tyre Sealant
 2. 150 PSI Air Compressor (with nozzles)
 3. Carry Case
-

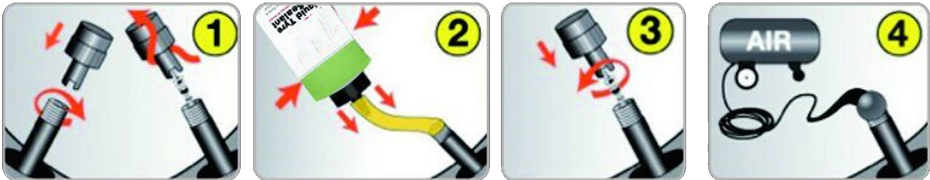
Using This Kit

IMPORTANT - PLEASE READ: This emergency tyre puncture repair kit is suitable for repairing breaches (punctures) up to 6mm (size). For any punctures which are bigger than this, please seek assistance from a professional mechanic who will have to replace the tyre.

To use this kit, please follow the instructions below:

1. Locate the puncture on your tyre. To ensure the effectiveness of the sealant, please rotate your tyre until the punctured area is facing down towards the ground.
2. Please shake the sealant bottle well before use. Never mix this sealant with any other self-sealing agent or water.
3. Remove the punctured tyre's valve core and fully deflate the affected tyre (Figure 1).
4. Attach one end of the provided clear straw to the sealant's nozzle. Then, attach the other end of the clear straw to the punctured tyre's valve. See Figure 2.
5. Proceed to fill the tyre with the sealant. Please refer to table below for the recommended amount of sealant.
6. Remove the clear straw from your tyre's valve and replace the valve core (Figure 3).
7. Connect the supplied air compressor to affected tyre's valve and inflate your tyre to its recommended air pressure (please refer to your vehicle's handbook). Once done, switch off the compressor and replace the valve's cap. See Figure 4.

One you have used this kit to temporarily repair your tyre, please take it to your local garage/tyre repair shop to replace the affected tyre.



Recommended Sealant Amount For A Tyre

Application	OZ.	ml
Bicycle	3	89
Motorcycle	8-16	237-473
Auto	16	473
Truck/SUV	20	592
ATV	24-32	710-946

Technical Specifications

Supplier Code

SWCHEM48

Product Name

Streetwize Emergency Tyre Puncture Repair Kit

Air Compressor Pressure

150 PSI

Tyre Sealant Formulation

Water, acetic acid, ethanediol (Acute Toxicity), organic polymer with chloroethane

Technical Support

If you require any technical support for your product within the warranty period, please contact us on:

support@streetwizeaccessories.com

and provide the product name and supplier code (see Technical Specifications) along with the technical query and proof of purchase.



PRODUCT INFO

streetwize.online/SWCHEM48

Produktinformation

Information du produit

Información sobre el producto



Streetwize, Ashburton Road West,
Trafford Park, Manchester, M17 1RY

For Product Support:

E: support@streetwizeaccessories.com

T: +44 (0)161 447 8597

For Trade Enquiries:

E: sales@streetwizeaccessories.com

T: +44 (0)161 447 8580

EU Regd. Address: Ace Supply Co (Europe) Ltd. D02 A098, ROI

www.streetwizeaccessories.com