



# 12V 400 Amp (Peak) Emergency Jumpstarter & Portable Power Bank

SWPB1

## Information For Use

14000 mAh Battery Capacity

400 AMP (Peak)

12V

200 AMP  
(Continuous)



Emergency Jumpstarts

Petrol Engines: Up to 2500cc (2.5L)

Diesel Engines: Up to 2000cc (2.0L)

# Manual Contents

<b>Intention for Use</b>	3
<b>Product Elements</b>	3
<b>On First Use</b>	3
<b>Charging the Unit</b>	3
Charging Via The Mains	3
Charging Via 12V Socket	3
<b>Performing Emergency Jumpstarts</b>	4
Functionality of Smart Jumpstart Cables	4
<b>Charging Smartphones, Tablets and Laptops</b>	5
Charging smartphones, tablets and other USB devices	6
Charging laptops & larger gadgets	6
<b>LED Torch</b>	7
<b>Health &amp; Safety Warnings</b>	7
<b>Manufacturer's Warranty</b>	7
<b>Technical Support</b>	8
<b>Technical Specifications</b>	8

## Intention for Use

*Thank you for purchasing the 12V 400 Amp (Peak) Emergency Jumpstarter & Portable Power Bank from Streetwize. This powerful piece of kit can jumpstart 12V vehicles with petrol engines up to 2.5L and diesel engines up to 2.0L.*

This product also acts as a robust power bank that can provide hours of portable power for smartphones, tablets and laptops.

---

## Product Elements

1. Streetwize 12V 400 Amp (Peak) Emergency Jumpstarter & Portable Power Bank
2. 12V DC Socket Charger
3. 230V AC Mains Charger
4. 3-in-1 USB cable with Type C, Micro USB and Lighting Adapters
5. Smart Jump Start Cables
6. Input/Output Cable
7. 8-piece Laptop Charger Adapter Kit
8. Carry Case

---

## On First Use

*Before using this product, we highly recommend that you charge the unit for at least 3 hours. We also advise that you keep the power bank fully charged whenever possible.*

Important: This product is able to jump start vehicles when the LED battery indicator shows a minimum of 3 LED lights being lit up. However, for optimum performance, we advise that you fully charge the unit until the LED battery indicator shows all 5 LEDs being lit.

Never perform an emergency jump start when this unit's LED battery indicator is showing less than 3 LED lights as this may lead to damage to the product, or cause it to malfunction.

### **IMPORTANT – PLEASE NOTE**

This product provides a peak output of 400Amps. Please note that the peak output lasts for a very limited amount of time. The peak output will only activate if you are jumpstarting engine sizes that exceed the specifications on the front of this manual, so please ensure you are jumpstarting the correct engine size for this product.

---

## Charging the Unit

*This unit comes supplied with two charging cables, a 230V AC mains charging cable and 12V DC charging cable.*

### Charging Via The Mains

With the 230V AC mains charging cable, connect the cable to the Input 15V/1A socket on the unit. Then connect the cable to your mains supply and switch on the mains. Charge until all five LED charge indicator lights are static. Charge time is approx. 5 to 6 hours.

### Charging Via 12V Socket

Using the 12V charging cable, as before, connect the cable to the Input 15V/1A socket on the unit. Then connect the cable to your vehicle 12V socket, and then turn your vehicle on to commence charging. Charge time longer than mains charging.

Important: Use the mains charging option as the primary method of charging this power bank. The 12V charging option should be used as a secondary option as this will risk depleting your vehicle's battery.

## Performing Emergency Jumpstarts

To perform an emergency jumpstart, please follow the instructions below:

1. Take the smart jumpstart cables and connect it to your vehicle's 12V battery terminals. Connect the RED cable to the positive terminal FIRST, then connect BLACK cable to the negative terminal SECOND. Make sure the clips are well-connected to the battery terminals.

Caution: Never connect the red & black crocodile clips together at the same time.

2. Then, connect the smart jumpstart cables to the unit. You should see a Green LED light appear on the smart jumpstart cable's terminal followed by a single beep sound to confirm correct connectivity.
3. Place the unit on a steady surface under the bonnet.
4. Attempt to start your vehicle's engine. DO NOT attempt to start the engine for more than 4 seconds. The vehicle's engine should start immediately. If it doesn't, turn off the engine and wait for at least 15 seconds
5. Once the engine has been ignited, immediately unplug the battery cable adaptor from the unit first, and then remove the crocodile clips from the battery. Then, place everything back into its carry case.

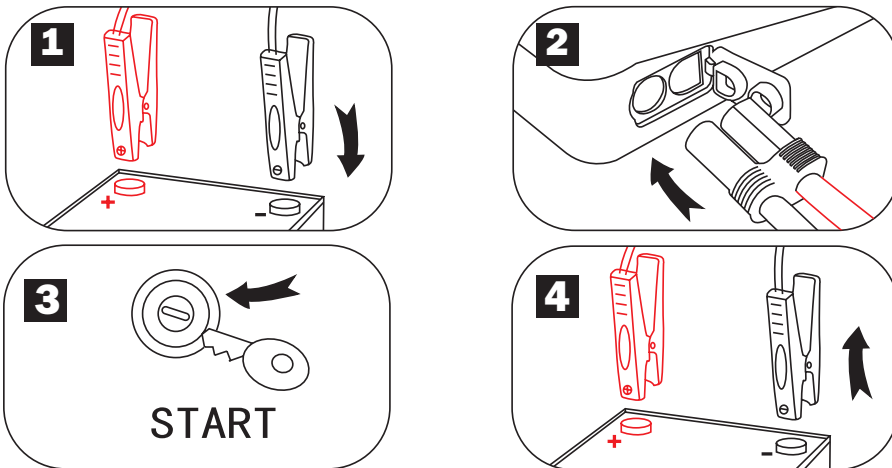


Figure 1

Please note: The unit will NOT be able to perform an emergency jumpstart if the vehicle has a voltage rate above 12.3V. If the vehicle does not start, this may indicate another problem and we advise that you get your vehicle checked by a qualified mechanic or professional.

## Functionality of Smart Jumpstart Cables

The included smart jumpstart cables come with an LED indicator that displays either a red or green light and it also comes with a warning sound.

Fault/Functionality	LED Light / Sound
Reverse polarity connection	Solid Red LED w/ continuous short beeps
Short-circuit protection	Solid Red LED w/ continuous short beeps
Overheat protection	Solid Red LED w/ continuous short beeps
Over-discharging protection	Flashing Red LED light
Searching for status connection	Green/Red LED flashing
Correct connection	Green LED after beep

## Charging Smartphones, Tablets and Laptops

This unit comes with two charging outputs, one 19V/3.5Amp and one 12V/2Amp; and a single input 15V/1Amp. See figure 2 below.

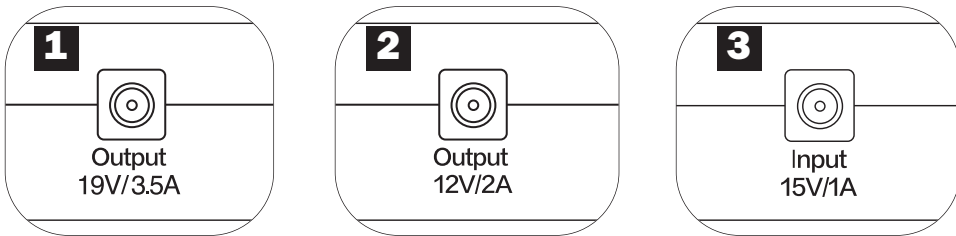
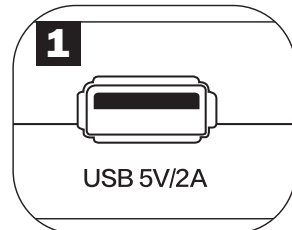


Figure 2

It also comes with a single USB charge port (5V/2Amp).

**IMPORTANT:** Do not charge the unit and charge an electronic device at the same time. This will shorten the power bank's battery life.



## Charging smartphones, tablets and other USB devices

---

**For charging smartphones, tablets and other USB devices, please use the 5V/2Amp USB output and the follow the instructions below:**

1. Connect the provided 3-in-1 USB charging cable plug into the 5V/2A USB output port.
2. Insert the correct adaptor for the device to be charged.
3. When the cable is connected Press the “On” button once to commence charge.

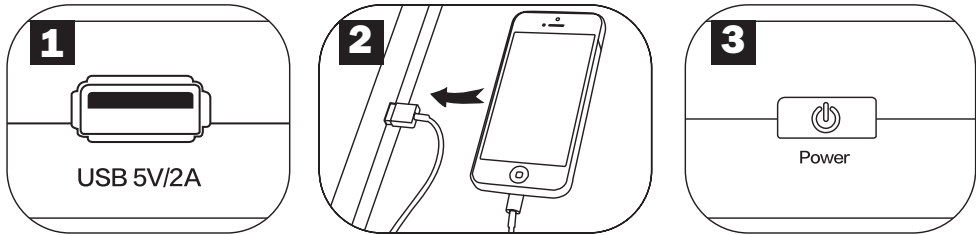


Figure 3

## Charging laptops & larger gadgets

---

**Please Note: Laptops & larger gadgets generally require a 19V power supply.**

This product comes supplied with an 8-piece adaptor kit for charging laptops and larger gadgets. The adapter kit does not include an adaptor for charging Apple laptops.

For charging laptops and larger gadgets, please use either the 19V/3.5Amp or 12V/2Amp output and the follow the instructions below:

1. Plug in the supplied Input/Output cable into either the 19V/3.5Amp or 12V/2Amp output port on the unit.
2. Choose the correct adaptor for your laptop/gadget and then connect this adaptor to the Input/Output cable.
3. Connect to the laptop and then press the “On” button.

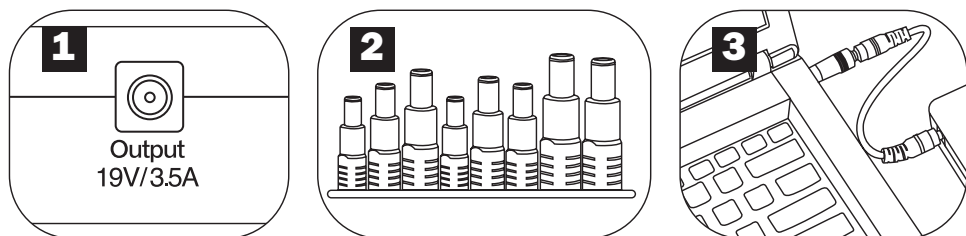
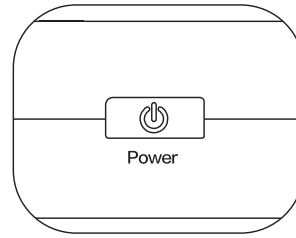


Figure 4

## LED Torch

To turn on the LED torch, press and hold the “On” button to turn on the LED torch. Then, press again to select either SOS FLASHING or STROBE (fast) mode.

Press the “On” button again to switch off.



---

## Health & Safety Warnings

- The power bank will generate heat when charging. Charge it in a well ventilated area. Keep the power bank away from heat sources, direct sunlight, humidity, water or other liquids.
- Do not operate the power bank if it is wet or damaged to prevent electrical shock, explosion and/or injury. Improper repairs of this device may place the user at risk.
- Do not use the power bank with wet hands. Do not use this unit for anything other than its intended use.
- The power bank is not a toy. Keep out of reach of children.
- Do not charge under pillows, blankets or any other fabric.
- Do not store in a car during hot weather.
- Short-circuiting a Li-ion battery can cause it to ignite or explode.
- Never open a Li-ion battery's casing. Li ion batteries contain safety devices that protect the cells inside from abuse, if damaged these can cause the battery to ignite or explode.
- DO NOT use or store at temperatures above 50°C or below -10°C.
- Do not charge the power bank and charge an electronic device at the same time. This will shorten the power bank's battery life.

---

## Technical Support

If you require any technical support within the warranty period, please contact us on [support@streetwizeaccessories.com](mailto:support@streetwizeaccessories.com) and provide product name and supplier code (see Technical Specifications) along with the technical query and proof of purchase.

---

## Technical Specifications

<b>Product</b>	<b>Streetwize 12V 400 AMP (Peak) Emergency Jumpstarter &amp; Portable Power Bank</b>
Product Code	SWPB1
AC/DC Input	230V AC & 12V DC
Input	15V/1Amp
Output	19V/3.5Amp & 12V/2Amp
USB Output	5V 2.0Amp
Output Current	12V/200 Amp (Continuous)
Output for Jumpstart	12V/400 Amp (Peak)
Capacity	14000mAh
LED Saving	1Watt
Operating temp	-10°C to +50°C
Cycle life	1000 recharges
LED life	50,000 hours
Charging Time (Mains)	Approx. 5 to 6 hours
Size	158mm x 75mm x 30mm



Streetwize: Ashburton Road West, Trafford Park, Manchester M17 1RY

[www.streetwizeaccessories.com](http://www.streetwizeaccessories.com)

For Product Support:

E: [support@streetwizeaccessories.com](mailto:support@streetwizeaccessories.com)

T: +44 (0)161 447 8597

For Trade Enquiries:

E: [sales@streetwizeaccessories.com](mailto:sales@streetwizeaccessories.com)

T: +44 (0)161 447 8580

EU Registered address: **Ace Supply Co (Europe) Ltd.** 25 Herbert Place, Dublin 2, D02 A098 Republic of Ireland.