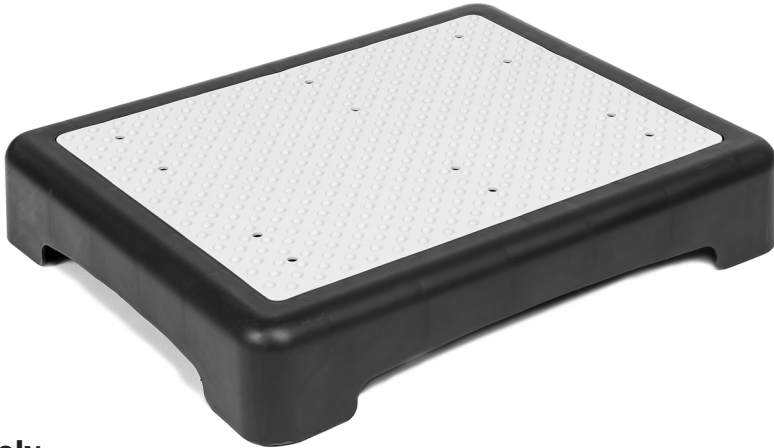




SWMOB4

Outdoor Half Step



Use Safely

- Place the step on a flat, firm surface to prevent rocking, sliding, or tipping during use.
- Do not jump on the step
- Do not place on gravel, grass, or uneven terrain without securing it properly. The step may become unstable.
- Stand only on the centre of the step to avoid tipping.
- Check and do not exceed the recommended weight limit.
- Ensure the step is not shifting or wobbling.
- Not suitable for wheelchair users or individuals with limited mobility.
- Although the step has drainage holes, step surface and surrounding area may become slick when wet.
- Keep the step clean & dry by wiping with a cloth or brush.
- Children must be supervised when using the step.

Streetwize,
Suite GA, Marsland House
Marsland Road, Sale M33 3AQ

For Product Support:
support@streetwize.co.uk

EU Regd. Address:
Ace Supply Co (Europe) Ltd.,
Dublin 2, D02 A098, ROI

www.streetwize.co.uk