



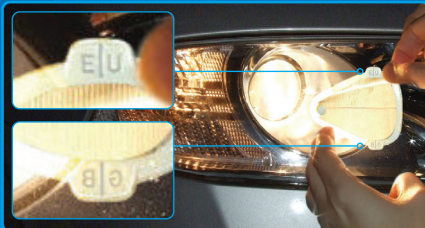
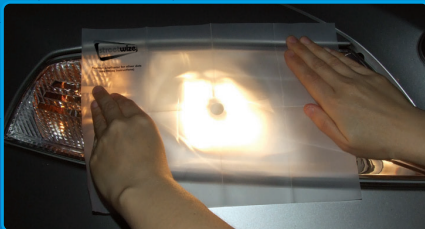
STEP 2

Apply one of the silver reflective adhesive dots through the hole in the diffuser sheet onto the headlamp.

This identifies the correct position for the Headlamp Converter.

Leave the headlamps switched on for a minimum of five minutes (*the heat will assist in initial adhesion of the Headlamp Converter*).

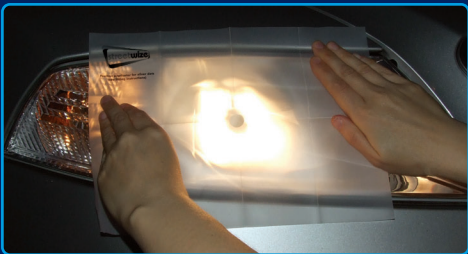
Remove the diffuser sheet and retain for use with the other headlamp.



Headlight Converter Kit

Easy Fitting Guide





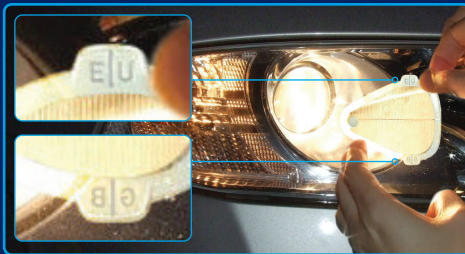
STEP 1

Clean headlights thoroughly and switch on the Dipped Beam only.

Position the diffuser sheet over the headlamp to dull the light and show the distinct outline of the beam pattern. *This will appear less distinct on older type headlights.*

Adjust the sheet so that the hole in the centre of the sheet sits over the centre of the beam pattern or bulb.

Due to the design of the product, exact position of the Headlamp Converter is not critical.



STEP 3

Remove the white backing paper from the Headlamp Converter and the brown backing paper from the back of the Converter.

The extra brown backing from around the edge can be removed now or when the Converter is in place.

Hold the Converter so that the text “EU” is at the top (for driving in Europe), or “GB” at the top (for driving in Britain).

Using the horizontal centre line and the vertical lines on the “EU” & “GB” tabs for correct alignment, place the Headlamp Converter so that narrow end of the Converter sits over the centre of the reflective dot. **Do not remove the silver reflective dot.**

Apply firm pressure all around the edges of the Headlamp Converter to ensure good adhesion.



STEP 4

Repeat Steps 1 to 3 for the other headlamp, using the same application sheet and ensuring the Headlamp Converter is attached correctly.

REMOVAL WARNING: To assist removal, switch on headlamps to allow the heat to soften the adhesive prior to removal. Your Headlamp Convertors should be removed immediately upon return to the UK. Take care not to scratch or damage plastic headlights. Any residual adhesive should be removed using an alcohol based cleaner, methylated spirits - Do not use tools, white spirit or any acetone based cleaners, as this could damage plastic headlights.

PLEASE NOTE: The images here are for illustration purposes only. Actual product made differ slightly in appearance but will work in exactly the same way.