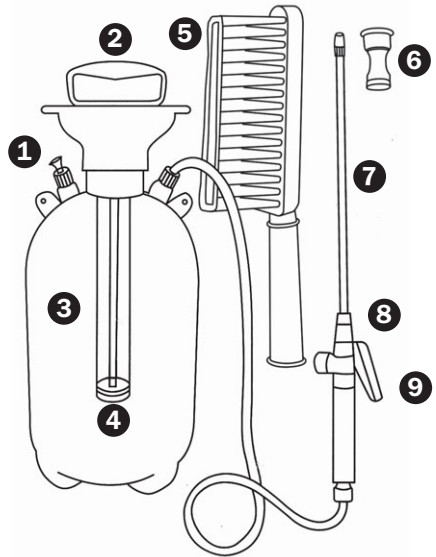


Portable Power Washer



Specifications:

Bottle dimensions

H 54cm x D 21cm - (21 $\frac{1}{4}$ " x 8")

Description of contents:

1. Safety Pressure Valve
2. Pump Handle
3. Spray Bottle (10 Litre Capacity)
4. Pump Mechanism.
5. Brush Attachment.

Hose length - 2.5m (8ft).

Lance dimensions - 53cm (21")

Brush dimensions - 38cm (15")

6. Adjustable Spray Nozzle.
Please Note: This nozzle DOES NOT attach directly to the trigger mechanism
7. Lance Extension.
8. Nozzle Connector for Brush or Lance.
9. Trigger.

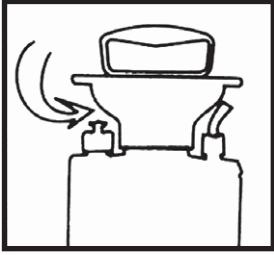
Also included are x2 spare washers for use with the lance extension.

SAFETY INSTRUCTIONS

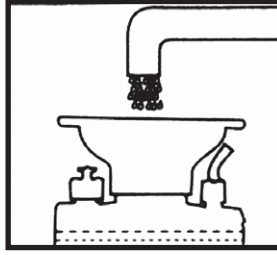
1. Always wear protective clothing, gloves and mask when spraying.
2. Avoid spraying in strong winds. If spraying in light wind conditions always spray with the wind blowing the spray away from you.
4. Always release pressure before refilling, servicing or storing.
5. Do not leave sprayer unattended while pressurised.
6. Chemical sprays are dangerous, if swallowed or come in contact with the skin. please always refer to the chemical supplier safety instructions or contact the poisons information centre or a doctor immediately.
7. Always refer to mixing safety instructions as specified by chemical supplier.
8. Wash thoroughly after use.

Do not exceed maximum filling level - 10 Litres.

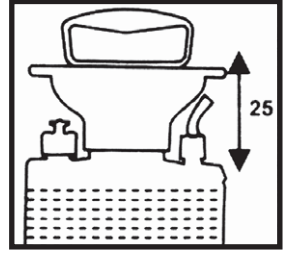
General/Usage instructions for use.



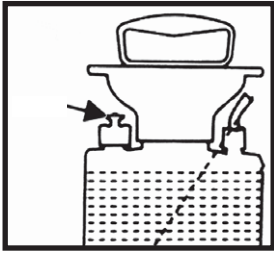
1. Open Lid to fill.



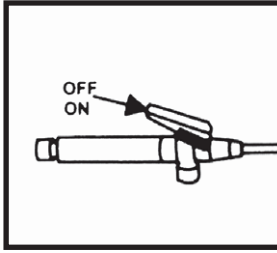
2. Do not exceed maximum filling level 10 Litres.



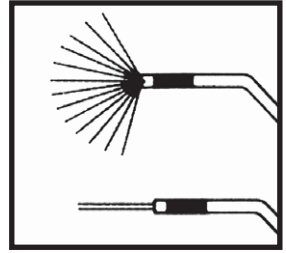
3. Pump handle to generate pressure. Max 25 pumps.



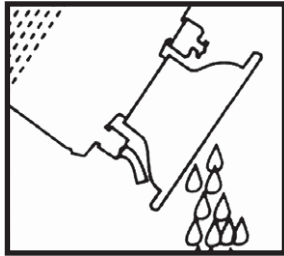
4. Safety pressure relief valve will activate if max pressure is reached.



5. Use On/Off trigger to control spray.



6. Adjust Nozzle at end for either Fine Mist or Direct Spray.



7. Always release pressure when job is finished and empty bottle of excess liquid. Always wash thoroughly after using chemical sprays.

Please note:

It is essential before using your **Power Washer** to ensure that the washer (A) is firmly secured under the lip (B), see diagram.

Use a flat head screwdriver to gently tap the washer (A) in the direction of the arrow until it is fully secured under the lip (B) (above right).

