



streetwize

12Volt 4Amp & 6Amp

Battery Charger



SWBCG4

PLEASE NOTE: This product is a Battery Charger ONLY, the unit will NOT hold a charge or jumpstart any vehicle.



SWBCG6

Part No.	Rated Output	Battery Voltage	Battery Capacity
SWBCG4	4 Amp	12 Volt	12-48 Ah
SWBCG6	6 Amp	12 Volt	20-80 Ah

Please read these instructions carefully before operating this battery charger.

Battery Maintenance:

Please check your car battery regularly throughout the year and especially in the winter.

Faulty cells can cause problems with your battery, check the cells with a hydrometer, if any cell is reading lower than the others it can indicate a faulty cell. If this is the case have your battery checked, as you may need a new battery. It is possible that a battery may appear flat when it could simply be a loose connection of the battery terminals. Check the terminals and tighten if necessary then check the battery again.



Safety Instructions: FOR INDOOR USE ONLY.

To enable safe operation of this battery charger, make sure you follow basic safety principles to reduce a risk of personal injury, electric shock and fire.

Always ensure the battery charger is kept in a dry place to avoid damage, and store out of the reach of children. Do not use the charger in damp or wet areas as moisture will damage the transformer.

Always check the battery chargers plug, cables and crocodile clips before use. Do not open the charger, there are no serviceable parts.

When charging, the liquid in the battery may bubble causing a release of gas, this is flammable so always operate the charger in a well ventilated area and away from naked flames and sparks.

Do not leave the battery charger whilst in operation for long periods of time.

These chargers are only suitable for 12 Volt Lead-Acid batteries and should not be used to recharge NICAD or any other type of battery.

DANGER: Avoid getting battery acid (electrolyte) on your skin or clothing, as it may cause burns. If this occurs rinse immediately with cold water and if necessary seek medical advice.

Please Note: There may be no indication of the Amp Meter needle if the charger is connected to a fully charged battery.

The charger contains a temperature-sensitive switch that automatically cuts off when the charger is overloaded or becomes excessively hot. The charger will switch back on after the unit has cooled.

Operating Instructions:

Please read the information on the front of these instructions for the maximum battery capacity recommended for use with this charger. Using with batteries smaller/higher than this capacity may lead to damage of battery and/or charger.

1. Disconnect the Battery from the vehicle to avoid damage to the alternator. It is advisable where possible to remove the battery from the vehicle as spillage from the battery can cause damage.
2. If you have a **maintenance free/sealed** battery it is not necessary to carry out the following checks. Carefully remove all the caps from each battery cell, and ensure the liquid is at the recommended level. Top up with distilled or de-ionised water if required (ALWAYS wear protective gloves as this liquid is corrosive). Tap water should NOT be used under any circumstances, allow time for any gases to escape before replacing the caps. Warning: if your battery is the AUTOFIL type, manufactured by Dagenite or Exide, the glass balls and the long filler cap MUST be left in place during charging.
3. **DO NOT** plug the charger in until you have connected the crocodile clips correctly.
4. Connect the crocodile clips in the following order.
 - a) Connect the positive (+ Red) charging lead to the positive (+ Red) terminal.
 - b) Connect the negative (- Black) charging lead to the negative (- Black) terminal.

It is important that the crocodile clips are making good contact with the battery terminals.

TROUBLESHOOTING: If Battery Charger does not work in the first instance please replace the “flat” blade car type fuse located on the base of the charger with the spare blade fuse supplied.

IMPORTANT OPERATING INFO:

5. Plug the Charger in using a fused AC mains plug socket. When a battery is first connected, the Amp Meter will indicate that it is charging (needle points to the right, Fig 1), as the battery becomes charged the charging rate will drop/discharge. When the charging level is constant (needle points to the left, Fig 2), the battery is fully charged to it's optimum level.

Please note: The Amp Meter will never drop to zero during charging. The Battery Charger has Reverse Polarity Protection if the leads are incorrectly connected the Amp Meter the needle will swing back and forth continuously, **IMMEDIATELY** unplug the charger from the mains and reverse the connection.

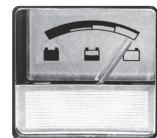


Fig 1

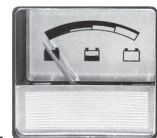


Fig 2



- To disconnect the battery when charged, switch off the mains supply and unplug. **Caution:** Because of risk of explosive gas, only disconnect the crocodile clips after unplugging the battery charger from the mains supply. Check the fluid levels and top up if necessary and wipe the battery clean. If the battery has been removed, replace in the vehicle and re-connect.

Product Specifications:

Streetwize Part Number: SWBCG4


Voltage Rating Input: 230V 50Hz

Output Rating: 12V DC - 2.8 ADC equal to 4 Amp RMS

Streetwize Part Number: SWBCG6

Voltage Rating Input: 230V 50Hz

Output Rating: 12V DC - 4.2 ADC equal to 6 Amp RMS

The WEEE symbol  on this product means that this product should be ethically dismantled or recycled to minimise environmental impact. Please check with your local authority for more information.

IMPORTANT: ADDITIONAL SAFETY INFORMATION

This Battery Charger is **NOT** intended for use by persons (including children) with reduced physical, sensory or mental capabilities, or lack of experience and knowledge, unless they are supervised or have been given instruction concerning use of the Battery Charger by a person responsible for their safety.

Streetwize: Ashburton Road West, Trafford Park, Manchester M17 1RY

For product support: E: support@streetwizeaccessories.com

T: +44 (0)161 447 8597

For trade enquiries: E: sales@streetwizeaccessories.com

T: +44 (0)161 447 8580

or contact us on our online form: www.streetwizeaccessories.com

EU Registered: **The Ace Supply Co (Europe) Ltd**, 25 Herbert Place, Dublin 2, D02 A098 ROI.

Over 1000 car & leisure products in our range. To find out more follow us on social media.

 Search "Streetwize"

