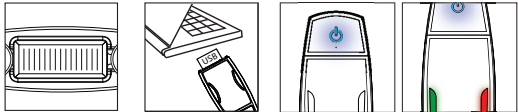


GB Mr Handsfree SPY – Quick Reference Guide

INTRODUCTION

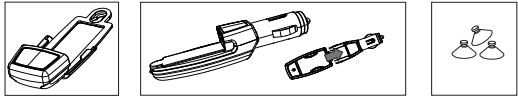
The mr Handsfree SPY is a legal device designed to improve road safety. It is designed to raise awareness on the road. The SPY offers you more safety while driving but does NOT give you the right to exceed the speed limits. Always make sure you drive carefully! The device is ready to use 'straight out of the box' thanks to the pre-installed database of fixed speed camera locations. Mr Handsfree offers free download and regular updates of the database on its website www.mrhandsfree.com. Please check the separate sheet "Download database locations" for more information.

ACCESSORIES, PARTS & FUNCTIONS



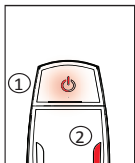
- Solar panel**
For solar charging
- USB Plug***
For charging when battery is low
- For upload of fixed camera database
- ON/OFF button**
- LED indicators**

*Note: If the USB plug does not fit into your USB port, you should use a universal USB extension cable (optional, not included)



- Holder + suction cups**
- For windshield mounting
- Car charger**
- For charging when battery is low
- For use when battery is low
- For some car designs, the position of cigarette lighter does not allow GPS-reception
- Extra set of suction cups**

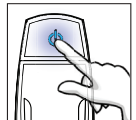
CHARGING



- => LED 2 flashing (and no USB connection): battery is low
- => LED 1 ON (and USB connection to PC or car charger): charging is in process
- => LED 1 OFF (and USB connection to PC or car charger): battery is fully charged

- Attention!**
- Make sure that the SPY is fully charged before using the device.
 - For initial charge it is recommended to use USB charging.
 - Solar charging will start automatically when the battery is low and the solar panel is directed towards the sun.
 - Using solar power for charging will significantly extend your standby & operation time.
 - Charging indication will be delayed if the SPY has not been used for a long time & battery is drained.

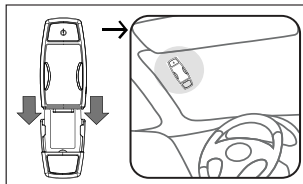
ON/OFF PROCEDURE



- => Turning ON: Press and hold until you hear a melody and blue LED = ON
- => Turning OFF: Press and hold until you hear a melody and blue LED = OFF

- Attention!**
- When you are using the SPY for the first time, it can take some time for the device to catch the satellites.
 - The SPY will turn off automatically if there has been no movement for more than 15 minutes.

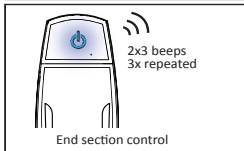
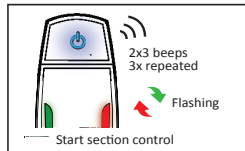
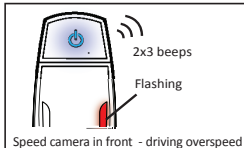
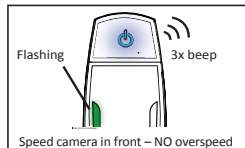
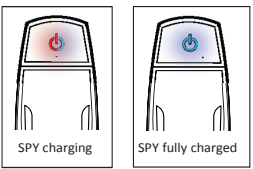
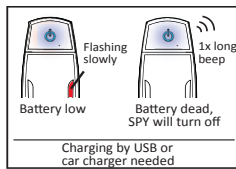
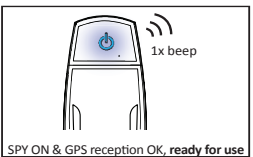
MOUNTING



Place the SPY with the suction cups on your windshield preferably at the driver's side and definitely with the solar panel facing the sun. The SPY can also be used when it is placed in the cigarette plug (when battery is low or during charging).

- Attention!**
- Make sure that your windshield is clean (grease-proof) and press firmly on each suction cup for a proper adhesion.

LED INDICATIONS & BEEPS



When driving speed is faster than 100 km/h, the SPY will alarm twice. When driving speed is less than 99 km/h, the SPY will alarm once.

GUARANTEE

Mr Handsfree is a registered trademark of TE-Group NV. The mr Handsfree brand stands for superior product quality and outstanding customer service. That is why mr Handsfree warrants this product against all defects in material and workmanship for a period of **two (2) years** from the date of original purchase of the product. The conditions of this guarantee and the extent of responsibility of mr Handsfree under this guarantee can be downloaded from our website: www.mrhandsfree.com.

DECLARATION OF CONFORMITY

Hereby,

Company:	TE-GROUP nv
Address:	Kapelsestraat 61, 2950 Kapellen - BELGIUM

declare, that the following equipment:

Product Name:	mr Handsfree Spy
Product Type:	GPS Early warning device

Is in compliance with the essential requirements and other relevant provisions of Directive 1999/5/EC.

The product has been tested against the following standards and specifications, applying versions valid on march 28, 2011:
EN 301489-3 V1.4.1
EN 300 487 + A1

Joseph van Oosterum, CEO TE Group NV, 28-09-2011
Version 2.0 - 01 December 2008