



Steering Wheel To Pedal Lock

Thank you for purchasing this Heavy Duty Pedal to Steering Wheel Lock from Streetwize. This product is intended to protect your vehicle against theft and also acts as a visual theft deterrent. It is made from a highly durable aluminium alloy that is resistant to excessive force which includes hammer attack and saw cuts.

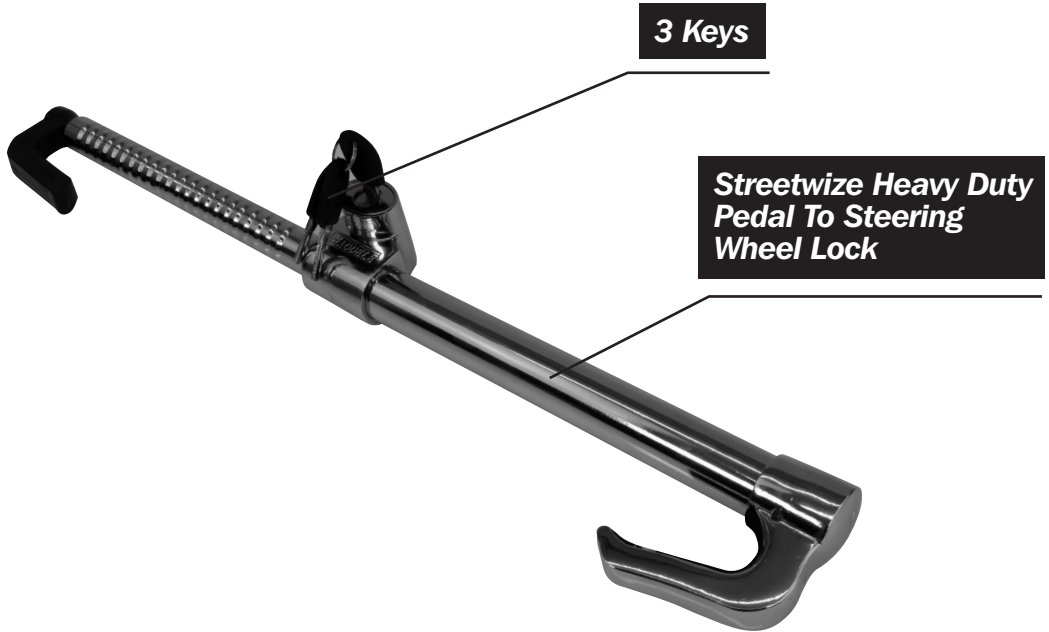
This lock is suitable for use in cars, vans, caravans, motorhomes, lorries and trucks. Plus, thanks to its heavy duty construction, it can also be used as a window breaker.

Before using this product, we highly recommend that you read all the information in this document. Please keep this document for future reference.



SWPL

Product Elements



Please note: If one of these keys should be misplaced, lost or stolen, we do NOT provide replacement spare keys. Please keep your spare keys in a safe place.

Usage Instructions

1. Remove the product and keys from its packaging and dispose of the packaging in the appropriate manner.
2. To fully expand the Pedal to Steering Wheel Lock, insert the key into the lock (Figure 1) and turn the key to release the double cylinder lock (Figure 2).



FIGURE 1



FIGURE 2

3. Once the double cylinder lock has been released, pull the blue hook end to expand the cylinder, and expand the lock to its maximum reach (Figure 3).



FIGURE 3

4. Before securing onto your vehicle's steering wheel/pedal, use the key to lock the double cylinder and remove the key out the lock, but keep the lock fully expanded.
5. To secure the lock to your vehicle, place the metal hook with the padded grip onto your steering wheel (Figure 4) and then place the blue hook end around one of your vehicle's pedals.

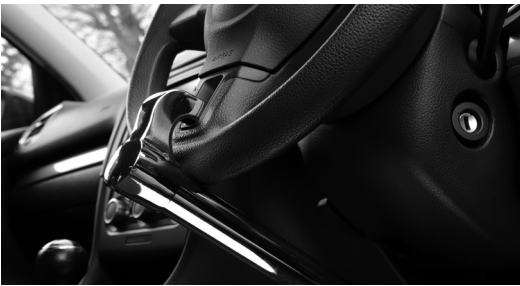


FIGURE 4

6. Then adjust the length of the lock to secure in place. When adjusting the length, the double cylinder will lock it into place. If you need to expand the lock, you will need to use the key to unlock the double cylinder lock.
7. Once in place, your vehicle is now secure (Figure 5).



FIGURE 5

8. To remove, simply use the key to unlock the double cylinder and then expand the lock. Then carefully unhook the product from both the pedal and steering wheel.
9. Fully contract the lock and lock into the place for future use.

Window Breaker

This product can be used as a window breaker for emergency situations. To use the product as a window breaker, first make sure the product is fully contracted. Then with the metal hook end, break the window.

Maintenance

1. When this product is not in use, please store it in a dry place. This product can be stored in your vehicle's glove compartment or boot.
2. To clean this product, please wipe clean with a soft & dry cloth.

Health & Safety

1. This product is not a toy. Children must be supervised at all times when they are near this product.
2. This product should not be used for any other purpose besides its intended use that has been explicitly stated in this document.
3. In the unlikely event that product becomes faulty, please do not use this product or repair the product.

Technical Specifications

Product Name	Streetwize Heavy Duty Pedal to Steering Wheel Lock
Supplier Code	SWPL
Materials	Aluminium alloy, Q235 steel, A3 steel, PVC plastic
Fully Contracted Length	37cm
Maximum Length	80cm
Keys Supplied	Yes (X3)

Streetwize: Ashburton Road West, Trafford Park, Manchester M17 1RY

For Product Support:

E: support@streetwizeaccessories.com

T: +44 (0)161 447 8597

For Trade Enquiries:

E: sales@streetwizeaccessories.com

T: +44 (0)161 447 8580

www.streetwizeaccessories.com

EU Registered Address: Ace Supply Co (Europe) Ltd, 25 Herbert Place, Dublin 2, D02 A098 R.O.I