



Wireless

OBDII Diagnostic Code Reader

For iOS/Android phones, tablets, PC & Macs.



SWOBD3

Please Note: You will only be able to turn an engine warning / fault light OFF when the problem causing the warning light has been resolved.



Product Parameters

1. Communication method: WiFi
2. Software platform: Support Android /iOS/ Windows
3. Operating voltage: 9V~16V
4. Operating temperature: -40°C~85°C
5. Operating humidity: <60%
6. Supported vehicle: OBDII protocol vehicle

Multi-Protocol Support

1. SAE J1850 PWM (41.6Kbaud)
2. SAE J1850 VPW (10.4Kbaud)
3. ISO9141-2(5 baud init, 10.4Kbaud)
4. ISO14230-4 KWP (5 baud init, 10.4 Kbaud)
5. ISO14230-4 KWP (fast init, 10.4 Kbaud)
6. ISO15765-4 CAN (11bit ID, 500 Kbaud)
7. ISO15765-4 CAN (29bit ID, 500 Kbaud)
8. ISO15765-4 CAN (11bit ID, 250 Kbaud)
9. ISO15765-4 CAN (29bit ID, 250 Kbaud)

Compatible Software (Free or Paid apps available)

Android:

- Torque
- DashCommand
- E OBDII
- OBD Car Doctor
- Auto Doctor

iOS:

- Auto Doctor
- DashCommand
- OBD Car Doctor

Windows:

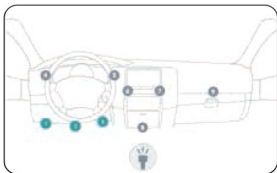
- ScanMaster-ELM

Package Contents

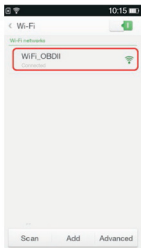
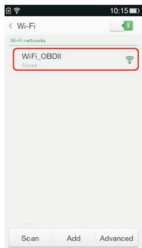
- 1 x OBDII
- 1 x CD Disk
- 1 x User Manual

Operation Instructions

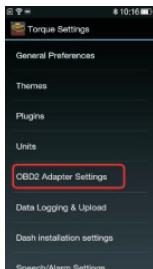
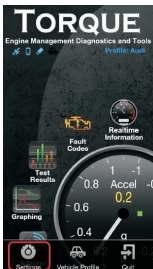
1. Download and install the Torque app or any other app you wish to use to your Android device from GooglePlay.
2. Plug the adapter into the OBDII port of your vehicle.



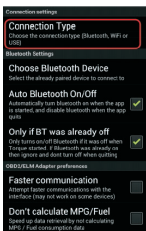
3. Open your device's WiFi menu and search 'WiFi_OBDII' and then connect. Click Connection OBDII WiFi



4. Navigate to the Settings from the Main Menu, then select “OB2 Adapter Settings”.



5. Select “Connection Type” and set it to “WiFi”.



6. Wait for the connection to be completed.



If SWOBD3 show's "a communication error" ensure it is securely seated in the OBD port, if the problem persists please check OBD plug to see if any pins are bent or rusted, repair/clean any bent or rusty pins if necessary.

Once connection is complete, adjust any settings to preference before diagnosis. When finished, use the back button on your phone to return to the main menu of Torque.

To use with a laptop or PC you will need to download compatible OBDII software and connect to the OBDII unit over the built-in Wifi signal.

PLEASE NOTE: YOU DO NOT NEED TO BE CONNECTED TO YOUR PERSONAL WIFI NETWORK. THE SWOBD3 UNIT TRANSMITS IT'S OWN WIFI SIGNAL THAT YOU WILL NEED TO CONNECT TO.



Troubleshooting

My device pairs with the adapter, but the Torque app won't connect to the scanner.

The most common reason for this issue is that the internal setup steps for Torque have not been completed. Make sure that you have completed these steps in the following order: Open Torque > Enter the Torque settings menu > Select OBDII adapter settings > Select connection type > Choose WiFi > Return to the main menu.

If this has been completed and does not resolve the problem, try to disconnect WiFi and restart your device. This fixes most minor connection issues.

My phone and Torque connect with the adapter, but Torque is prompting a message stating "Cannot connect to ECU".

First try resolving the issue by restarting your device. This problem could also indicate that your vehicle is not OBDII compliant. Check to see if your vehicle meets the protocol requirements of the scanner.

If your car meets protocol, try re-installing the software app. While this solution is less likely to be the cause, it has been reported to work in some cases.

The adapter will not read my ABS, SRS, StabiliTrack, scheduled maintenance or any other lights.

This scanner is for OBDII vehicles only. This means that it can only be used to read OBDII codes (emissions system) in 99.9% of vehicles. In order to read these other codes you will need a more specialized tool, usually specific to your vehicle.



Specification:

Output protocol: Wifi

Voltage: 9-16V

Current: 70-80mA

Range: 10m/33ft

WARRANTY: To validate the warranty on the product, please go to our website and enter your details on the warranty registration screen.
www.streetwizeaccessories.com

Streetwize Accessories:

Unit 1, Royce Trading Estate, Ashburton Road West,
Trafford Park, Manchester M17 1RY

Sales enquiries: sales@streetwizeaccessories.com

Technical enquiries: support@streetwizeaccessories.com

Telephone: 0161 447 8597

www.streetwizeaccessories.com